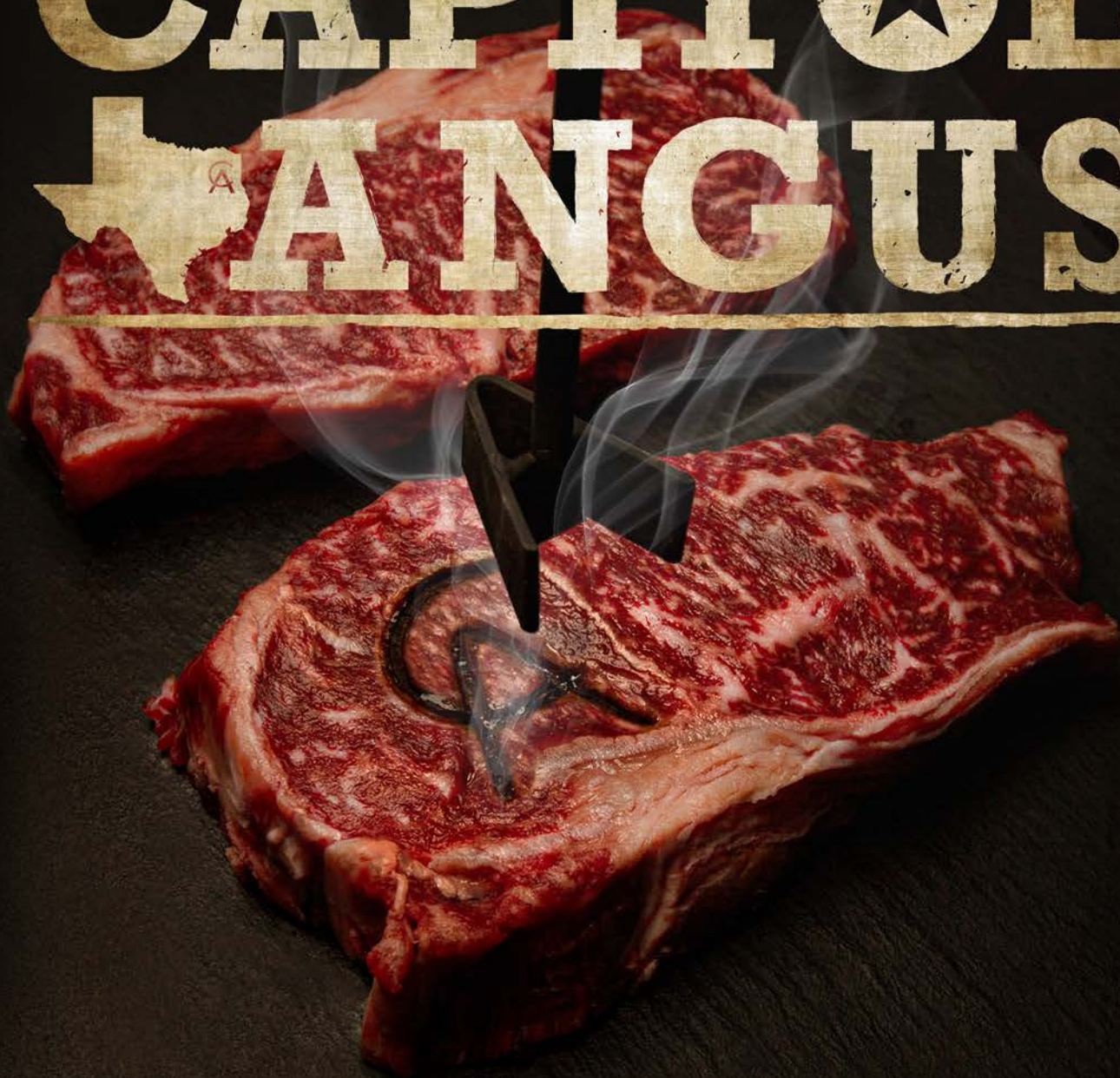


CAPITOL ★ ANGUS



PRODUCTION SALE

NOV 12TH 6PM ★ @ THE RANCH WHITEHOUSE, TX

capitolangus.com

CAPITOL ★ ANGUS

Aaron DuVall
903-312-6994

Tyler DuVall
903-316-6225



BEEFHOUSE
www.TexasBeefHouse.com



SALE MANAGED BY:
Chris Earl
630-675-6559

Wes Tiemann
816-244-4462





Welcome

2022 has been a year of transformation at Capitol Angus Ranch. During this past year we have focused on developing our ranch infrastructure. We have invested in land, barns, corrals, and a new feeding program. This new program allows us to mix our own feed, tailoring it to individual groups of cattle. This program will pursue the potential genetic expression of our herd as it relates to growth, feed efficiency, and marbling.

For the past decade, we had focused on acquiring the genetic building blocks from great breeding programs across the country, which included daughters of DSA New Direction 1022, Baldrige Isabel Y69, Baldrige Isabel F047, EWA 3128 of 9067 Weigh Up, Chair Rock Prophet 3071, Black Ceyla of Conanga 0267, and Poss Ellunamere 399 (Dam of Poss Deadwood). You will find unique and rare progeny from sires that have ceased production, including Baldrige Xpand, Baldrige Pappy, Hoover No Doubt, and Connealy Confidence Plus. Our goal is to produce like and kind of these cattle. We believe this sale offering has been our best effort to date to achieve that goal.

In addition to our bull offering, we have selected a dozen of our best young females to include in this sale. These yearling heifers are balanced and best represents what is coming down the Capitol Angus Ranch pipeline. We are also selling three young heifer calves that are the progeny of Poss Deadwood & HPCA Zephyr 9517. These will represent some of the most progressive genetics from our program.

We feel like we have reached a milestone in our ranching program over the past year. Next year our bull offering will be over 100 bulls along with about 50-75 females. This has truly been a several year process made possible only through the strategic support of Chris Earl and CK6 Consulting team.

The sale offering will be available for viewing on both November 11 and November 12. If you would like to see the animals prior to these dates, please contact Tyler DuVall and he will gladly make arrangements to show you this offering. We sincerely appreciate your interest in our breeding program and look forward to seeing you on sale day.



Aaron DuVall 903-312-6994 || Tyler DuVall 903-316-6225
Sale Facility -- 19682 FM 756 || Tyler, TX 75703

CapitolAngus.com



Aaron DuVall

BEEFHOUSE

www.TexasBeefHouse.com

***Texas BeefHouse supper served Friday evening
before the sale and on sale day!***

Capitol Angus Ranch is a strategic part of our beef business, Texas BeefHouse.



CAPITOL ANGUS

NOVEMBER 12

2022 • 6 PM

AT THE RANCH • TYLER, TX

SALE LOCATION

19682 FM 756
Tyler, TX 75703

SALE DAY PHONES

Aaron DuVall 903-312-6994
Tyler DuVall 903-316-6225

SALE STAFF



Chris Earl, CK6 Consulting.....630-675-6559
Wes Tiemann, Auctioneer.....816-244-4462
Kody Fleeman, CK6 Consulting.....573-881-0117

REPRESENTATIVES

Radale Tiner, American Angus Association.....979-492-2663
Phil Stoll, Weekly Livestock Reporter.....817-366-7332



Watch and bid on CCI.live!

TERMS & CONDITIONS: Terms are cash or check. Transfers will be made within 30 days of payment. Cattle sell under the standard terms and conditions offered by the American Angus Association, www.angus.org/pub/suggested_sale_terms.pdf.

UPDATES AND ANNOUNCEMENTS: A supplement sheet will be provided sale day and may take precedence over printed material in this book. AAA updates EPDs on a weekly basis.

INSURANCE: Insurance can be purchased on sale day through the clerk's office.

TRUCKING: Capitol Angus will deliver bulls free of charge within the Continental United States as long as full payment is made within 14 days from time of sale. The timing and orchestration of the free delivery will be determined by Capitol Angus. If payment is not made within 14 days from sale of bull(s), then transportation of bull(s) is to be made fully at buyer's expense. Transportation services will be available to be purchased by buyers from local livestock delivery companies at time of sale.

BULL GUARANTEE: All bulls are guaranteed for the first breeding season against injury or infertility. This policy does not cover neglect or acts of God. Any guarantee of bull performance, semen collection, health status, or payment timeline outside of our standard bull guarantee and payment terms must be made prior to the sale and will not be negotiated after the sale.

ACCOMMODATIONS

Hilton Garden Inn 903-509-1166
220 E Grande || Tyler, TX 75703

Best Western South Park Inn & Suites 903-534-8800
120 W Rieck Rd || Tyler, TX 75703

DIRECTIONS TO THE RANCH

From I-20 coming from east or west. Go south on Toll 49 to FM 756. Take FM 756 south. Go through four-way stop at FM 346, ranch is two miles past four-way stop on the west side of FM 756.

From Hwy 69 coming from the south. Take FM 346 east toward Whitehouse, TX. At four-way stop at FM 756 turn south. Go two miles down FM 756, ranch is on west side of road.

From Hwy 64 coming from the northeast. Take loop 323 southwest to Hwy 110 south towards Whitehouse, TX. Take FM 346 west. At four-way stop take FM 756 south, go two miles and ranch is on west side of road.



Bulls





CA Pappy 882

BULL REG: 20118745 BIRTH DATE: 01/29/21 TATTOO: 882

Baldrige Pappy
19235838
Hoover No Doubt
Baldrige Isabel B061
G A R 100X#
RRR Rita R0397
18831931
DSA New Direction 1022

Mogck Bullseye#
Miss Blackcap Ellston J2
G A R Prophet#
Baldrige Isabel Y69
A A R Ten X 7008 S A#
G A R 5050 New Design A91
B/R Future Direction 4268
Riverbend Rita S730

CED	BW	WW	YW	SC	MILK	DOC
9	1.4	71	131	0.72	30	21
CW	MARB	RE	FAT	\$M	\$B	\$C
61	1.10	1.04	0.008	79	186	320

CED	BW	WW	YW	DMI	YH	SC	DOC	HP	CEM	MLK	MW	MH	CW	MARB	RE	FAT	TEND
28	46	28	18	67	45	48	33	33	24	33	50	31	22	12	11	54	13

Herd bull prospect who traces to the great DSA New Direction 1022. Recommended for heifers or cows with a BW of 74 lbs and top 25% for 18 EPDs or \$Values. Big scrotal and huge muscle expression on 882. His sire, Baldrige Pappy, was a past \$110,000 top selling bull at Baldrige Performance Angus, NE.



DAM OF LOTS 1, 2 RRR Rita R0397

CA Pappy 883

BULL REG: 20118743 BIRTH DATE: 01/25/21 TATTOO: 883

Baldrige Pappy
19235838
Hoover No Doubt
Baldrige Isabel B061
G A R 100X#
RRR Rita R0397
18831931
DSA New Direction 1022

Mogck Bullseye#
Miss Blackcap Ellston J2
G A R Prophet#
Baldrige Isabel Y69
A A R Ten X 7008 S A#
G A R 5050 New Design A91
B/R Future Direction 4268
Riverbend Rita S730

CED	BW	WW	YW	SC	MILK	DOC
16	-1.1	67	120	0.74	27	19
CW	MARB	RE	FAT	\$M	\$B	\$C
51	1.31	0.86	-0.006	77	187	320

CED	BW	WW	YW	DMI	YH	SC	DOC	HP	CEM	MLK	MW	MH	CW	MARB	RE	FAT	TEND
3	14	46	32	41	59	48	35	10	9	56	46	24	45	5	20	41	62

Recommended for heifers or cows, BW 70 lbs. Full brother to lot 1 with 19 different EPDs or \$Values in top 25%.

Flush brothers with
calving ease and muscle!



Muscle and marbling
in a big, stout, rugged package!

3

CA Pappy 777

BULL REG: 19998582 BIRTH DATE: 01/25/21 TATTOO: 777
 Hoover No Doubt
Baldrige Pappy 19235838 | Baldrige Isabel B061
 Mogck Bullseye#
 Miss Blackcap Ellston J2
 G A R Prophet#
 Baldrige Isabel Y69
 Connealy Confidence Plus#
 Connealy Confidence 0100#
 Elbanna of Conanga 1209
 Connealy Consensus 578B
 Baldrige Pratisa W165
RRR Pratisa R0828 19135576 | Baldrige Pratisa C763

CED	BW	WW	YW	SC	MILK	DOC
0	2.6	78	142	1.57	26	34
CW	MARB	RE	FAT	\$M	\$B	\$C
64	1.38	0.98	0.009	88	201	349

CED	BW	WW	YW	DMI	YH	SC	DOC	HP	CEM	MLK	MW	MH	CW	MARB	RE	FAT	TEND
88	85	32	14	66	68	19	4	25	56	81	61	51	26	5	12	32	17

Recommended for cows, BW 80 lbs. Records 17 different EPDs or \$Values in top 25%, including top 1% for \$C, \$B, Doc and \$G. Herd bull prospect from the famed Pratisa cow family. Dam is one the most valued donors in the program.



reference sire

Baldrige Pappy

BULL REG: 19235838 BIRTH DATE: 01/08/2018 TATTOO: F050
 Mogck Bullseye#
 Hoover No Doubt | Miss Blackcap Ellston J2
 Mogck Sure Shot#
 Mogck Mary 1255
 SydGen C C & 7#
 Miss Blackcap Ellston D154#
 G A R Prophet#
 C R A Bextor 872 5205 608#
 G A R Objective 1885
 Styles Upgrade J59#
Baldrige Isabel B061 | Baldrige Isabel Y69
 Baldrige Isabel T935

CED	BW	WW	YW	SC	MILK	DOC
7	1.3	78	136	1.72	23	24
CW	MARB	RE	FAT	\$M	\$B	\$C
61	1.19	0.8	0.028	90	180	323



Lot 4

CA Pappy 778

4

BULL REG: 19998580 BIRTH DATE: 01/25/21 TATTOO: 778

Baldrige Pappy
19235838
| Hoover No Doubt
| Baldrige Isabel B061
RRR Pratissa R0828
19135576
| Connealy Confidence Plus#
| Baldrige Pratissa C763

Mogck Bullseye#
Miss Blackcap Ellston J2
G A R Prophet#
Baldrige Isabel Y69
Connealy Confidence 0100#
Elbanna of Conanga 1209
Connealy Consensus 578B
Baldrige Pratissa W165

CED	BW	WW	YW	SC	MILK	DOC
5	0.7	71	124	0.69	32	26
CW	MARB	RE	FAT	\$M	\$B	\$C
51	1.19	0.97	0.053	97	170	317

CED	BW	WW	YW	DMI	YH	SC	DOC	HP	CEM	MLK	MW	MH	CW	MARB	RE	FAT	TEND
70	59	47	44	51	98	68	28	6	58	48	85	93	53	9	8	87	8

Recommend for heifers or cows, BW 76 lbs. Records 14 different EPDs or \$Values in top 25%. A sale day favorite who carries as much muscle as any bull in the offering.



DAM OF LOTS 5,6 Dsa Rito 9Q13 1022 1417

CA Pappy 850

5

BULL REG: 20118755 BIRTH DATE: 12/14/20 TATTOO: 850

Baldrige Pappy
19235838
| Hoover No Doubt
| Baldrige Isabel B061
Dsa Rito 9Q13 1022 1417
17875371
| Rito 9Q13 of Rita 5F56 GHM#
| DSA New Direction 1022

Mogck Bullseye#
Miss Blackcap Ellston J2
G A R Prophet#
Baldrige Isabel Y69
Gardens Highmark#
Rita 5F56 of 1198 FD
B/R Future Direction 4268
Riverbend Rita S730

CED	BW	WW	YW	SC	MILK	DOC
8	1.8	64	118	1.72	24	15
CW	MARB	RE	FAT	\$M	\$B	\$C
56	0.66	0.99	0.019	53	167	270

CED	BW	WW	YW	DMI	YH	SC	DOC	HP	CEM	MLK	MW	MH	CW	MARB	RE	FAT	TEND
37	60	38	28	70	22	6	56	81	20	83	45	11	25	52	9	68	5

Recommended for heifers or cows, BW 60 lbs. Records 8 EPDs or \$Values in top 25%.

CA Pappy 851

6

BULL REG: 20118750 BIRTH DATE: 12/11/20 TATTOO: 851

Baldrige Pappy
19235838
| Hoover No Doubt
| Baldrige Isabel B061
Dsa Rito 9Q13 1022 1417
17875371
| Rito 9Q13 of Rita 5F56 GHM#
| DSA New Direction 1022

Mogck Bullseye#
Miss Blackcap Ellston J2
G A R Prophet#
Baldrige Isabel Y69
Gardens Highmark#
Rita 5F56 of 1198 FD
B/R Future Direction 4268
Riverbend Rita S730

CED	BW	WW	YW	SC	MILK	DOC
8	0.8	59	108	0.97	30	21
CW	MARB	RE	FAT	\$M	\$B	\$C
56	0.91	1.15	-0.007	66	179	298

CED	BW	WW	YW	DMI	YH	SC	DOC	HP	CEM	MLK	MW	MH	CW	MARB	RE	FAT	TEND
33	42	53	36	42	32	50	19	41	53	45	37	13	28	18	3	27	18

Recommended for heifers or cows, BW 88 lbs. Eleven top 25% EPDs or \$Values.



CA Pappy 858

7

BULL REG: 20118754 BIRTH DATE: 12/13/20 TATTOO: 858

Baldrige Pappy
19235838
Hoover No Doubt
Baldrige Isabel B061



A A R Ten X 7008 S A#

CA Mason Caroline 335
18466827
DSA New Direction 1022

Mogck Bullseye#
Miss Blackcap Ellston J2
G A R Prophet#
Baldrige Isabel Y69
Mytty In Focus#
A A R Lady Kelton 5551#
B/R Future Direction 4268
Riverbend Rita S730

CED	BW	WW	YW	SC	MILK	DOC
1	4.3	77	136	1.15	26	15
CW	MARB	RE	FAT	\$M	\$B	\$C
77	1.17	0.99	0.022	70	210	342

CED	BW	WW	YW	DMI	YH	SC	DOC	HP	CEM	MLK	MW	MH	CW	MARB	RE	FAT	TEND
91	97	8	9	85	9	37	61	57	8	50	15	3	1	6	3	48	8

Recommended for cows, BW 76 lbs. Fifteen top 25% EPS or \$Values including top 1% for \$C, \$B, and \$F. Dam is one of the real power cows in the program as seen by this powerful son of hers. Use him on cows and he will produce tons of marbled meat.

8

CA Pappy 859

BULL REG: 20118751 BIRTH DATE: 12/06/20 TATTOO: 859

Baldrige Pappy
19235838
Hoover No Doubt
Baldrige Isabel B061



A A R Ten X 7008 S A#

CA Mason Caroline 335
18466827
DSA New Direction 1022

Mogck Bullseye#
Miss Blackcap Ellston J2
G A R Prophet#
Baldrige Isabel Y69
Mytty In Focus#
A A R Lady Kelton 5551#
B/R Future Direction 4268
Riverbend Rita S730

CED	BW	WW	YW	SC	MILK	DOC
9	1.6	80	140	0.86	25	17
CW	MARB	RE	FAT	\$M	\$B	\$C
75	1.14	0.71	0.007	75	199	333

CED	BW	WW	YW	DMI	YH	SC	DOC	HP	CEM	MLK	MW	MH	CW	MARB	RE	FAT	TEND
63	92	5	6	79	7	50	45	14	4	61	14	4	3	8	36	58	5

Recommended for heifers or cows, BW 60 lbs. Ranks in the top 25% for 17 different EPDs or \$Values, including top 1% for \$C.



9

CA Pappy 861

BULL REG: 20118753 BIRTH DATE: 12/14/20 TATTOO: 861

Baldrige Pappy
19235838
Hoover No Doubt
Baldrige Isabel B061



A A R Ten X 7008 S A#

CA Mason Caroline 335
18466827
DSA New Direction 1022

Mogck Bullseye#
Miss Blackcap Ellston J2
G A R Prophet#
Baldrige Isabel Y69
Mytty In Focus#
A A R Lady Kelton 5551#
B/R Future Direction 4268
Riverbend Rita S730

CED	BW	WW	YW	SC	MILK	DOC
6	2.0	63	107	0.39	29	15
CW	MARB	RE	FAT	\$M	\$B	\$C
51	1.18	0.72	0.019	67	169	286

CED	BW	WW	YW	DMI	YH	SC	DOC	HP	CEM	MLK	MW	MH	CW	MARB	RE	FAT	TEND
84	92	50	69	47	80	81	61	36	20	54	75	45	39	8	37	67	25

Recommended for heifers or cows, BW 66 lbs.

10

CA Pappy 862

BULL REG: 20118752 BIRTH DATE: 12/13/20 TATTOO: 862

Baldrige Pappy
19235838
Hoover No Doubt
Baldrige Isabel B061



A A R Ten X 7008 S A#

CA Mason Caroline 335
18466827
DSA New Direction 1022

Mogck Bullseye#
Miss Blackcap Ellston J2
G A R Prophet#
Baldrige Isabel Y69
Mytty In Focus#
A A R Lady Kelton 5551#
B/R Future Direction 4268
Riverbend Rita S730

CED	BW	WW	YW	SC	MILK	DOC
3	3.6	68	116	1.04	25	10
CW	MARB	RE	FAT	\$M	\$B	\$C
59	0.92	0.86	-0.006	76	179	308

CED	BW	WW	YW	DMI	YH	SC	DOC	HP	CEM	MLK	MW	MH	CW	MARB	RE	FAT	TEND
89	97	26	37	29	30	47	71	64	34	65	53	34	18	16	15	28	17

Recommended for cows, BW 64 lbs.

Average EPDs on Non-Parent Angus Bulls

CAPITOL
ANGUS

ANGUS

CED	BW	WW	YW	CW	MARB	RE	\$M	\$B	\$C
8	1.2	74	132	57	1.09	1.04	70	177	300
CED	BW	WW	YW	CW	MARB	RE	\$M	\$B	\$C
7	1.2	61	108	47	0.61	0.61	63	137	239



reference sire

Rito 3S10 of 9Q15 Progress

BULL REG: 17670691 BIRTH DATE: 09/05/2013 TATTOO: 3S10

G A R Progress#
G A R Objective 2345

G A R Predestined#
G A R Ext 4206#
S S Objective T510 0T26#
G A R 1407 New Design 2413

Gardens Highmark#
Summitcrest Scotch Cap 0B45#
Green Garden Pride 6128 S1
C A Future Direction 5321#
Rita 1198 of 2536 Rito 616

CED	BW	WW	YW	SC	MILK	DOC
13	0.5	60	106	0.42	29	20
CW	MARB	RE	FAT	\$M	\$B	\$C
41	1.83	0.91	0.037	57	201	318

11

CA Rito 812

BULL REG: 20032153 BIRTH DATE: 12/30/20 TATTOO: 812

G A R Progress#
Rito 3S10 of 9Q15 Progress
17670691
Rita 9Q15 of Rita 5F56 GHM

G A R Prophet#
Pine View Susanna D417
18764767
Pine View Susanna B004

G A R Predestined#
G A R Objective 2345
Gardens Highmark#
Rita 5F56 of 1198 FD
C R A Bextor 872 5205 608#
G A R Objective 1885
Connealy Black Granite#
SH Objective 9001

CED	BW	WW	YW	SC	MILK	DOC
14	0.6	79	131	0.96	35	23
CW	MARB	RE	FAT	\$M	\$B	\$C
46	1.86	0.62	0.058	62	181	297

CED	BW	WW	YW	DMI	YH	SC	DOC	HP	CEM	MLK	MW	MH	CW	MARB	RE	FAT	TEND
10	41	23	56	50	15	38	33	74	89	20	53	14	64	1	62	94	51

Recommended for heifers or cows, BW 62 lbs. Ranks in the top 25% for 11 EPDs or \$Values, including top 1% for Marbling and \$G. The highest Marbling EPD in the offering.

12

CA Rito 813

BULL REG: 20032154 BIRTH DATE: 12/31/20 TATTOO: 813

G A R Progress#
Rito 3S10 of 9Q15 Progress
17670691
Rita 9Q15 of Rita 5F56 GHM

G A R Prophet#
Pine View Susanna D417
18764767
Pine View Susanna B004

G A R Predestined#
G A R Objective 2345
Gardens Highmark#
Rita 5F56 of 1198 FD
C R A Bextor 872 5205 608#
G A R Objective 1885
Connealy Black Granite#
SH Objective 9001

CED	BW	WW	YW	SC	MILK	DOC
13	-0.9	64	111	1.07	26	30
CW	MARB	RE	FAT	\$M	\$B	\$C
48	1.64	0.61	0.043	73	185	313

CED	BW	WW	YW	DMI	YH	SC	DOC	HP	CEM	MLK	MW	MH	CW	MARB	RE	FAT	TEND
5	7	76	81	30	23	40	11	42	34	67	80	30	73	1	75	94	66

Recommended for heifers or cows, BW 66 lbs. Ranks in the top 25% for 15 different EPDs or \$Values.

13

CA Rito 814

BULL REG: 20032155 BIRTH DATE: 12/27/20 TATTOO: 814

G A R Progress#
Rito 3S10 of 9Q15 Progress
17670691
Rita 9Q15 of Rita 5F56 GHM

G A R Prophet#
Pine View Susanna D417
18764767
Pine View Susanna B004

G A R Predestined#
G A R Objective 2345
Gardens Highmark#
Rita 5F56 of 1198 FD
C R A Bextor 872 5205 608#
G A R Objective 1885
Connealy Black Granite#
SH Objective 9001

CED	BW	WW	YW	SC	MILK	DOC
7	2.8	83	142	0.39	28	25
CW	MARB	RE	FAT	\$M	\$B	\$C
56	1.79	0.94	0.046	58	201	319

CED	BW	WW	YW	DMI	YH	SC	DOC	HP	CEM	MLK	MW	MH	CW	MARB	RE	FAT	TEND
61	80	17	32	56	29	77	35	50	72	56	38	30	37	1	21	90	66

Recommended for heifers or cows, BW 64 lbs. Ranks in the top 25% for 15 different EPDs or \$Values.

Top 1% Marbling
on lots 11, 12, and 13!

This set of brothers carry added frame and elite end-product merit. Every one of these brothers ranks in the top 1% for marbling. The 9001 females on the bottom side of these bulls have been generational, transmitting performance over decades.





14 CA Confidence Plus 827

BULL REG: 20028768 BIRTH DATE: 12/31/20 TATTOO: 827

Connealy Confidence Plus#
17585576

| Elbanna of Conanga 1209



| Baldrige Colonel C251

CA Rita 460
19291056

| Chair Rock Prophet 3071

Connealy Tobin
Becka Gala of Conanga 8281
Connealy Consensus#
Elbasta of Conanga 9703
baldrige Xpand x743
Baldrige Isabel Y69
G A R Prophet#
Chair Rock 5050 G A R 1131

CED	BW	WW	YW	SC	MILK	DOC
10	0.3	72	141	-0.14	31	19
CW	MARB	RE	FAT	\$M	\$B	\$C
59	1.17	1.43	0.012	64	199	322

CED	BW	WW	YW	DMI	YH	SC	DOC	HP	CEM	MLK	MW	MH	CW	MARB	RE	FAT	TEND
24	33	47	7	80	84	93	57	84	72	57	41	71	27	7	1	42	78

Recommended for heifers or cows, BW 66 lbs. Ranks in top 25% for 17 different EPDs or \$Values. Herd bull prospect with top 1% EPDs for RE and Angle, top 2% for \$C, \$B and \$C. Only bull in the breed with his combination of RE, Marb, CED, Angle, Claw, \$C, and BW. His dam is a young, valued donor in the program. Sale day favorite right there.



DAM OF LOTS 15, 16, 44, 47 E W A 678 of 3128 Sure Fire

15 CA Confidence Plus 785

BULL REG: 19997575 BIRTH DATE: 01/21/21 TATTOO: 785

Connealy Confidence Plus#
17585576

| Elbanna of Conanga 1209



| G A R Sure Fire#

E W A 678 of 3128 Sure Fire
18675046

| E W A 3128 of 9067 Weigh Up

Connealy Tobin
Becka Gala of Conanga 8281
Connealy Consensus#
Elbasta of Conanga 9703
Connealy In Sure 8524#
Chair Rock 5050 G A R 8086
Plattmerr Weigh Up K360#
Rita 9067 of Rita 5M13 Obj

CED	BW	WW	YW	SC	MILK	DOC
14	-0.1	72	134	0.73	26	29
CW	MARB	RE	FAT	\$M	\$B	\$C
63	0.88	1.00	0.027	76	180	309

CED	BW	WW	YW	DMI	YH	SC	DOC	HP	CEM	MLK	MW	MH	CW	MARB	RE	FAT	TEND
3	9	51	31	72	91	54	13	45	63	56	64	81	31	28	11	73	83

Recommended for heifers or cows, BW 66 lbs. Ranks in top 25% for an excellent 18 different EPDs or \$Values. Dam records an incredible 22 different EPDs or \$Values in top 25% with top 1% CED, \$F, \$B and \$C.

16 CA Confidence Plus 712

BULL REG: 19954531 BIRTH DATE: 09/27/20 TATTOO: 712

Connealy Confidence Plus#
17585576

| Elbanna of Conanga 1209



| G A R Sure Fire#

E W A 678 of 3128 Sure Fire
18675046

| E W A 3128 of 9067 Weigh Up

Connealy Tobin
Becka Gala of Conanga 8281
Connealy Consensus#
Elbasta of Conanga 9703
Connealy In Sure 8524#
Chair Rock 5050 G A R 8086
Plattmerr Weigh Up K360#
Rita 9067 of Rita 5M13 Obj

CED	BW	WW	YW	SC	MILK	DOC
15	-0.9	72	136	1.02	33	20
CW	MARB	RE	FAT	\$M	\$B	\$C
59	1.17	0.89	0.001	81	196	335

CED	BW	WW	YW	DMI	YH	SC	DOC	HP	CEM	MLK	MW	MH	CW	MARB	RE	FAT	TEND
2	8	50	22	40	87	27	61	30	52	30	73	73	27	10	10	27	89

Recommended for heifers or cows, BW 61 lbs. Ranks in top 25% for an excellent 21 different EPDs or \$Values.



reference sire
Connealy Confidence Plus

BULL REG: 17585576 BIRTH DATE: 03/03/2013 TATTOO: 3940

| Connealy Tobin
Connealy Confidence 0100#
| Becka Gala of Conanga 8281

Bon View New Design 208#
Delia of Conanga 66
Connealy Thunder#
Becka Lee of Conanga 37
KMK Alliance 6595 187#
Blinda of Conanga 004
Connealy Forward#
Elba of Conanga 3761#

CED	BW	WW	YW	SC	MILK	DOC
9	0.1	64	123	-0.08	30	29
CW	MARB	RE	FAT	\$M	\$B	\$C
52	0.97	1.15	0.039	94	178	325

17

CA Confidence Plus 825

BULL REG: 20028766 BIRTH DATE: 12/29/20 TATTOO: 825

| Connealy Confidence 0100#
Connealy Confidence Plus#
17585576 | Elbanna of Conanga 1209

Connealy Tobin
Becka Gala of Conanga 8281
Connealy Consensus#
Elbasta of Conanga 9703
baldrige Xpand x743
Baldrige Isabel Y69
G A R Prophet#
Chair Rock 5050 G A R 1131

HOBOK
CA Rita 456
19291054 | Baldrige Colonel C251
| Chair Rock Prophet 3071

CED	BW	WW	YW	SC	MILK	DOC
12	0.0	66	127	0.49	35	30
CW	MARB	RE	FAT	\$M	\$B	\$C
42	1.06	0.85	-0.012	85	170	305

CED	BW	WW	YW	DMI	YH	SC	DOC	HP	CEM	MLK	MW	MH	CW	MARB	RE	FAT	TEND
15	38	56	20	36	97	67	13	59	84	29	77	95	55	14	12	11	29

Recommended for heifers or cows, BW 70 lbs. Ranks in the top 25% for 17 different EPDs or \$Values.



Lot 17

18

CA Confidence Plus 824

BULL REG: 20028765 BIRTH DATE: 12/25/20 TATTOO: 824

| Connealy Confidence 0100#
Connealy Confidence Plus#
17585576 | Elbanna of Conanga 1209

Connealy Tobin
Becka Gala of Conanga 8281
Connealy Consensus#
Elbasta of Conanga 9703
baldrige Xpand x743
Baldrige Isabel Y69
G A R Prophet#
Chair Rock 5050 G A R 1131

HOBOK
CA Rita 456
19291054 | Baldrige Colonel C251
| Chair Rock Prophet 3071

CED	BW	WW	YW	SC	MILK	DOC
10	-0.2	61	122	-0.13	42	27
CW	MARB	RE	FAT	\$M	\$B	\$C
55	1.06	0.76	0.062	73	171	295

CED	BW	WW	YW	DMI	YH	SC	DOC	HP	CEM	MLK	MW	MH	CW	MARB	RE	FAT	TEND
33	35	70	19	77	80	96	20	70	80	2	71	61	38	18	49	95	90

Recommended for heifers or cows, BW 68 lbs. Ranks in the top 25% for 14 different EPDs or \$Values.



Lot 18

19

CA Confidence Plus 842

BULL REG: 20051202 BIRTH DATE: 01/25/21 TATTOO: 842

| Connealy Confidence 0100#
Connealy Confidence Plus#
17585576 | Elbanna of Conanga 1209

Connealy Tobin
Becka Gala of Conanga 8281
Connealy Consensus#
Elbasta of Conanga 9703
Rito 9Q20 of Rita 5F56 GHM#
Welytok Total 10 Erianna 3B2
G A R Prophet#
Williams Erica 812

HOBOK
Powell Erica 8408
19258752 | Welytok Prime Divine 6D91
| Williams Prop Erica 255 654

CED	BW	WW	YW	SC	MILK	DOC
8	1.7	85	153	0.52	25	23
CW	MARB	RE	FAT	\$M	\$B	\$C
66	0.77	1.25	-0.020	79	181	314

CED	BW	WW	YW	DMI	YH	SC	DOC	HP	CEM	MLK	MW	MH	CW	MARB	RE	FAT	TEND
40	72	9	9	84	74	67	43	69	84	84	37	78	11	46	2	18	30

Recommended for heifers or cows, BW 78 lbs. Fourteen traits in the top 25% for EPDs or \$Values including top 1% for RE and Foot Angle.

20

CA Confidence Plus 855

BULL REG: 20124093 BIRTH DATE: 12/10/20 TATTOO: 855

| Connealy Confidence 0100#
Connealy Confidence Plus#
17585576 | Elbanna of Conanga 1209

Connealy Tobin
Becka Gala of Conanga 8281
Connealy Consensus#
Elbasta of Conanga 9703
baldrige Xpand x743
Baldrige Isabel Y69
G A R Prophet#
Chair Rock 5050 G A R 1131

HOBOK
CA Rita 456
19291054 | Baldrige Colonel C251
| Chair Rock Prophet 3071

CED	BW	WW	YW	SC	MILK	DOC
15	-0.3	69	121	0.24	38	18
CW	MARB	RE	FAT	\$M	\$B	\$C
39	1.06	0.85	0.002	96	150	291

CED	BW	WW	YW	DMI	YH	SC	DOC	HP	CEM	MLK	MW	MH	CW	MARB	RE	FAT	TEND
4	31	43	49	84	86	77	64	52	79	15	94	92	63	9	21	36	81

Recommended for heifers or cows, BW 66 lbs. Ten top 25% EPDs or \$Values including top 1% for \$M and \$W.



Lot 21

21 CA Confidence Plus 856

BULL REG: 20124091 BIRTH DATE: 12/11/20 TATTOO: 856
 | Connealy Confidence 0100#
Connealy Confidence Plus#
 17585576 | Elbanna of Conanga 1209
 | Baldridge Colonel C251
CA Rita 456
 19291054 | Chair Rock Prophet 3071

Connealy Tobin
 Becka Gala of Conanga 8281
 Connealy Consensus#
 Elbasta of Conanga 9703
 baldridge Xpand x743
 Baldridge Isabel Y69
 G A R Prophet#
 Chair Rock 5050 G A R 1131

CED	BW	WW	YW	SC	MILK	DOC
8	0.6	68	119	-0.15	31	32
CW	MARB	RE	FAT	\$M	\$B	\$C
44	1.20	0.77	0.034	76	163	287

CED	BW	WW	YW	DMI	YH	SC	DOC	HP	CEM	MLK	MW	MH	CW	MARB	RE	FAT	TEND
28	29	59	62	51	93	96	8	97	91	40	89	95	65	10	26	73	56

Recommended for heifers or cows, BW 72 lbs. Ranks in the top 25% for 12 different EPDs or \$Values.

22 CA Confidence Plus 857

BULL REG: 20124094 BIRTH DATE: 12/09/20 TATTOO: 857
 | Connealy Confidence 0100#
Connealy Confidence Plus#
 17585576 | Elbanna of Conanga 1209
 | Baldridge Colonel C251
CA Rita 456
 19291054 | Chair Rock Prophet 3071

Connealy Tobin
 Becka Gala of Conanga 8281
 Connealy Consensus#
 Elbasta of Conanga 9703
 baldridge Xpand x743
 Baldridge Isabel Y69
 G A R Prophet#
 Chair Rock 5050 G A R 1131

CED	BW	WW	YW	SC	MILK	DOC
9	0.7	82	149	0.17	37	26
CW	MARB	RE	FAT	\$M	\$B	\$C
61	1.06	1.03	0.024	68	183	305

CED	BW	WW	YW	DMI	YH	SC	DOC	HP	CEM	MLK	MW	MH	CW	MARB	RE	FAT	TEND
47	58	9	8	89	28	85	34	91	81	14	25	20	17	14	6	66	73

Recommended for heifers or cows, BW 70 lbs. Ranks in the 25% for 18 EPDs or \$Values including top 1% for \$W.

23 CA Confidence Plus 869

BULL REG: 20124088 BIRTH DATE: 12/10/20 TATTOO: 869
 | Connealy Confidence 0100#
Connealy Confidence Plus#
 17585576 | Elbanna of Conanga 1209
 | Baldridge Colonel C251
CA Rita 460
 19291056 | Chair Rock Prophet 3071

Connealy Tobin
 Becka Gala of Conanga 8281
 Connealy Consensus#
 Elbasta of Conanga 9703
 baldridge Xpand x743
 Baldridge Isabel Y69
 G A R Prophet#
 Chair Rock 5050 G A R 1131

CED	BW	WW	YW	SC	MILK	DOC
2	2.6	76	135	-0.53	27	29
CW	MARB	RE	FAT	\$M	\$B	\$C
61	0.79	1.23	0.004	81	183	318

CED	BW	WW	YW	DMI	YH	SC	DOC	HP	CEM	MLK	MW	MH	CW	MARB	RE	FAT	TEND
80	75	35	51	40	95	99	15	89	86	76	91	96	21	40	1	27	64

Recommended for cows, BW 90 lbs. Ranks in the top 25% for 17 different EPDs or \$Values including top 1% for RE and Angle.



Lot 24

24 CA Confidence Plus 881

BULL REG: 20098308 BIRTH DATE: 12/07/20 TATTOO: 881
 | Connealy Confidence 0100#
Connealy Confidence Plus#
 17585576 | Elbanna of Conanga 1209
 | Baldridge Colonel C251
CA Rita 472
 19291055 | Chair Rock Prophet 3071

Connealy Tobin
 Becka Gala of Conanga 8281
 Connealy Consensus#
 Elbasta of Conanga 9703
 baldridge Xpand x743
 Baldridge Isabel Y69
 G A R Prophet#
 Chair Rock 5050 G A R 1131

CED	BW	WW	YW	SC	MILK	DOC
10	-0.3	63	118	0.99	35	24
CW	MARB	RE	FAT	\$M	\$B	\$C
42	0.82	1.20	-0.013	77	158	282

CED	BW	WW	YW	DMI	YH	SC	DOC	HP	CEM	MLK	MW	MH	CW	MARB	RE	FAT	TEND
16	14	79	52	31	97	39	32	79	52	36	90	95	78	37	2	18	66

Recommended for heifers and cows, BW 68 lbs. Ranks in the top 25% for 18 different EPDs including top 1% for RE.

Free Delivery within the Continental United States





reference sire

Baldrige Alternative E125

BULL REG: 18837398 BIRTH DATE: 01/30/2017 TATTOO: E125

| Poss Total Impact 745#
| Poss Easy Impact 0119
| Poss Elmaretta 736

| Hoover Dam#
Baldrige Blackbird A030
| Baldrige Blackbird X89

| TC Total 410#
| Poss Blackcap 5116
| Hyline Right Time 338#
| Poss Elmaretta 025#
| SydGen C C & 7#
| Erica of Ellston C124#
| Styles Upgrade J59#
| Baldrige Blackbird P160

CED	BW	WW	YW	SC	MILK	DOC
12	1.1	68	122	0.59	14	18
CW	MARB	RE	FAT	\$M	\$B	\$C
64	1.03	0.91	0.009	36	194	288

25

CA Alt 817

BULL REG: 20028759 BIRTH DATE: 12/26/20 TATTOO: 817

| Poss Easy Impact 0119
Baldrige Alternative E125
18837398 | Baldrige Blackbird A030



| G A R Prophet#
Pine View Susanna D417
18764767 | Pine View Susanna B004

| Poss Total Impact 745#
| Poss Elmaretta 736
| Hoover Dam#
| Baldrige Blackbird X89
| C R A Bextor 872 5205 608#
| G A R Objective 1885
| Connealy Black Granite#
| SH Objective 9001

CED	BW	WW	YW	SC	MILK	DOC
4	3.6	99	165	1.11	21	34
CW	MARB	RE	FAT	\$M	\$B	\$C
73	1.20	0.89	0.023	67	195	320

CED	BW	WW	YW	DMI	YH	SC	DOC	HP	CEM	MLK	MW	MH	CW	MARB	RE	FAT	TEND
75	84	2	15	92	38	16	1	17	20	87	9	37	10	8	17	60	72

Recommended for cows, BW 71 lbs. Ranks in the top 25% for 18 different EPDs or \$Values, including top 1% for Doc, WW, and YW. Power bull here from a past Capitol donor who has left a legacy of marbled performance. Baldrige Alternative continues to leave the kind of progeny that are desired across the country and this offering. Excellent set of sons sell here.

27

CA Alt 884

BULL REG: 20098307 BIRTH DATE: 01/25/21 TATTOO: 884

| Poss Easy Impact 0119
Baldrige Alternative E125
18837398 | Baldrige Blackbird A030



| G A R Sunrise
CAM Sunrise A6052
18726130 | G A R Prophet A2044

| Poss Total Impact 745#
| Poss Elmaretta 736
| Hoover Dam#
| Baldrige Blackbird X89
| MCC Daybreak#
| G A R Objective R227
| G A R Prophet#
| G A R 5050 New Design A84

CED	BW	WW	YW	SC	MILK	DOC
13	0.0	78	134	-0.11	21	21
CW	MARB	RE	FAT	\$M	\$B	\$C
54	1.17	0.95	-0.044	55	176	283

CED	BW	WW	YW	DMI	YH	SC	DOC	HP	CEM	MLK	MW	MH	CW	MARB	RE	FAT	TEND
7	13	21	21	97	85	82	41	81	91	85	27	73	27	8	9	3	53

Recommended for heifers or cows, BW 70 lbs. Ranks in the top 25% for 15 different EPDs or \$Values. His donor dam is currently a donor for Pine View Angus, IA and left a tremendous set of daughters in this program. High marbling, easy fleshing genetics.

28

CA Alternative H094

BULL REG: 20151549 BIRTH DATE: 09/08/20 TATTOO: H094

| Poss Easy Impact 0119
Baldrige Alternative E125
18837398 | Baldrige Blackbird A030



| EF Commando 1366#
MVR Burgess E702
18834261 | Yon Burgess B437

| Poss Total Impact 745#
| Poss Elmaretta 736
| Hoover Dam#
| Baldrige Blackbird X89
| EF Complement 8088#
| Riverbend Young Lucy W1470
| Yon Future Focus T219#
| Yon Burgess W361

CED	BW	WW	YW	SC	MILK	DOC
8	2.6	80	135	1.03	21	16
CW	MARB	RE	FAT	\$M	\$B	\$C
61	0.63	1.06	0.021	68	159	274

CED	BW	WW	YW	DMI	YH	SC	DOC	HP	CEM	MLK	MW	MH	CW	MARB	RE	FAT	TEND
33	52	26	24	75	89	24	51	15	39	74	22	64	20	50	6	54	79

Recommended for cows.

26

CA Alt 819

BULL REG: 20028757 BIRTH DATE: 12/25/20 TATTOO: 819

| Poss Easy Impact 0119
Baldrige Alternative E125
18837398 | Baldrige Blackbird A030



| G A R Prophet#
Pine View Susanna D417
18764767 | Pine View Susanna B004

| Poss Total Impact 745#
| Poss Elmaretta 736
| Hoover Dam#
| Baldrige Blackbird X89
| C R A Bextor 872 5205 608#
| G A R Objective 1885
| Connealy Black Granite#
| SH Objective 9001

CED	BW	WW	YW	SC	MILK	DOC
11	1.4	83	145	0.97	20	29
CW	MARB	RE	FAT	\$M	\$B	\$C
76	1.29	0.58	0.076	49	193	299

CED	BW	WW	YW	DMI	YH	SC	DOC	HP	CEM	MLK	MW	MH	CW	MARB	RE	FAT	TEND
41	67	6	8	96	56	27	9	72	95	86	4	15	4	3	68	100	76

Recommended for heifer or cows, BW 60 lbs. Ranks in the top 25% for 18 different EPDs or \$Values.



DAM OF LOTS 27, 31, 32, 42 CAM Sunrise A6052



CA Xpand 844

29

BULL REG: 20051205 BIRTH DATE: 01/21/21 TATTOO: 844

Hoover Dam#
baldrige Xpand x743
 16762739 | Baldrige Queen S87

G A R Sunrise
Pine View Rita C066
 18205331 | VAN New Design 9320

SydGen C C & 7#
 Erica of Ellston C124#
 Baldrige Navigator N5#
 Baldrige Queen N914
 MCC Daybreak#
 G A R Objective R227
 G A R New Design 5050#
 G A R Objective 3557

CED	BW	WW	YW	SC	MILK	DOC
8	0.4	67	131	-0.07	37	30
CW	MARB	RE	FAT	\$M	\$B	\$C
51	1.20	1.07	-0.060	46	187	289

CED	BW	WW	YW	DMI	YH	SC	DOC	HP	CEM	MLK	MW	MH	CW	MARB	RE	FAT	TEND
61	59	24	2	85	19	85	4	96	52	3	5	4	13	8	5	3	73

Recommended for heifers or cows. Ranks in the top 25% for 19 different EPDs or \$Values including top 1% for \$G and Fat. Baldrige Xpand is a sire with a cross the genetic board performance and are very slick hided. The Sunrise daughter is consistently producing progeny reaching the top of the program with very fertile results.

30

CA Xpand 845

BULL REG: 20051206 BIRTH DATE: 01/23/21 TATTOO: 845

Hoover Dam#
baldrige Xpand x743
 16762739 | Baldrige Queen S87

G A R Sunrise
Pine View Rita C066
 18205331 | VAN New Design 9320

SydGen C C & 7#
 Erica of Ellston C124#
 Baldrige Navigator N5#
 Baldrige Queen N914
 MCC Daybreak#
 G A R Objective R227
 G A R New Design 5050#
 G A R Objective 3557

CED	BW	WW	YW	SC	MILK	DOC
12	0.0	52	99	0.23	33	21
CW	MARB	RE	FAT	\$M	\$B	\$C
33	0.93	1.24	-0.043	55	157	259

CED	BW	WW	YW	DMI	YH	SC	DOC	HP	CEM	MLK	MW	MH	CW	MARB	RE	FAT	TEND
20	24	83	52	36	42	72	34	89	42	10	64	33	71	26	1	4	25

Recommended for heifers or cows. Ranks in the top 25% for 14 different EPDs or \$Values including top 1% RE.



CA Ashland 782

31

BULL REG: 19997581 BIRTH DATE: 01/30/21 TATTOO: 782

G A R Early Bird
G A R Ashland
 18217198 | Chair Rock Ambush 1018

G A R Sunrise
CAM Sunrise A6052
 18726130 | G A R Prophet A2044

G A R Daylight
 G A R Progress 830
 B/R Ambush 28#
 G A R Yield Grade N366
 MCC Daybreak#
 G A R Objective R227
 G A R Prophet#
 G A R 5050 New Design A84

CED	BW	WW	YW	SC	MILK	DOC
15	-0.2	75	137	0.58	30	31
CW	MARB	RE	FAT	\$M	\$B	\$C
47	1.07	0.81	0.006	62	154	262

CED	BW	WW	YW	DMI	YH	SC	DOC	HP	CEM	MLK	MW	MH	CW	MARB	RE	FAT	TEND
4	17	57	23	87	74	51	6	79	94	30	62	74	53	22	23	33	99

Recommended for heifers or cows, BW 77 lbs. Ranks in the top 25% for 13 different EPDs or \$Values. Proven genetics right here.

32

CA Ashland 783

BULL REG: 19997578 BIRTH DATE: 01/31/21 TATTOO: 783

G A R Early Bird
G A R Ashland
 18217198 | Chair Rock Ambush 1018

G A R Sunrise
CAM Sunrise A6052
 18726130 | G A R Prophet A2044

G A R Daylight
 G A R Progress 830
 B/R Ambush 28#
 G A R Yield Grade N366
 MCC Daybreak#
 G A R Objective R227
 G A R Prophet#
 G A R 5050 New Design A84

CED	BW	WW	YW	SC	MILK	DOC
9	1.4	94	160	0.70	26	37
CW	MARB	RE	FAT	\$M	\$B	\$C
66	1.09	0.88	-0.009	57	173	281

CED	BW	WW	YW	DMI	YH	SC	DOC	HP	CEM	MLK	MW	MH	CW	MARB	RE	FAT	TEND
17	28	8	16	96	73	48	1	99	76	52	19	66	16	21	20	29	84

Recommended for heifers or cows, BW 70 lbs. Rank sin the top 25% for 15 different EPDs or \$Values including top 1% for \$W, WW and Doc. A sale day favorite with great phenotype.

33**CA Compadre 797**

BULL REG: 20013972 BIRTH DATE: 03/30/21 TATTOO: 797

G A R Momentum
 G A R Compadre 18916273
 G A R Daybreak N542
 K C F Bennett TheRock A473
 Powell Erica 8012
 Williams Prop Erica 255-139

G A R Progress#
 G A R Big Eye 1770
 MCC Daybreak#
 G A R Objective 3008
 K C F Bennett Southside#
 K C F Miss Protege W148
 G A R Prophet#
 Williams Erica 812

CED	BW	WW	YW	SC	MILK	DOC
14	0.4	70	121	-0.16	38	19
CW	MARB	RE	FAT	\$M	\$B	\$C
57	1.50	0.41	0.056	73	178	304

CED	BW	WW	YW	DMI	YH	SC	DOC	HP	CEM	MLK	MW	MH	CW	MARB	RE	FAT	TEND
7	21	53	59	83	13	95	46	18	76	5	44	25	42	2	87	97	92

Recommend for heifers or cows, BW 77 lbs. Ranks in the top 25% for 16 different EPDs or \$Values. One of the big marbling EPDs in the offering.

**34****CA Compadre 799**

BULL REG: 20013638 BIRTH DATE: 03/28/21 TATTOO: 799

G A R Momentum
 G A R Compadre 18916273
 G A R Daybreak N542
 Jindra Acclaim#
 CA Rita Acclaim 491
 E W A 678 of 3128 Sure Fire

G A R Progress#
 G A R Big Eye 1770
 MCC Daybreak#
 G A R Objective 3008
 Jindra 3rd Dimension
 Jindra Blackbird Lassy 1111
 G A R Sure Fire#
 E W A 3128 of 9067 Weigh Up

CED	BW	WW	YW	SC	MILK	DOC
12	-0.2	64	123	0.40	41	21
CW	MARB	RE	FAT	\$M	\$B	\$C
61	1.09	0.66	0.024	50	184	289

CED	BW	WW	YW	DMI	YH	SC	DOC	HP	CEM	MLK	MW	MH	CW	MARB	RE	FAT	TEND
24	37	60	16	70	11	69	50	73	88	2	33	10	20	13	45	65	71

Recommended for heifers or cows, BW 76 lbs. Ranks in the top 25% for 16 different EPDs or \$Values.

35**CA No Doubt 829**

BULL REG: 20028771 BIRTH DATE: 12/30/20 TATTOO: 829

Mogck Bullseye#
 Hoover No Doubt 17882682
 Miss Blackcap Ellston J2
 K C F Bennett TheRock A473
 Powell Erica 8043
 Williams Prop Erica 255 654

MOGCK Sure Shot#
 Mogck Mary 1255
 SydGen C C & 7#
 Miss Blackcap Ellston D154#
 K C F Bennett Southside#
 K C F Miss Protege W148
 G A R Prophet#
 Williams Erica 812

CED	BW	WW	YW	SC	MILK	DOC
6	3.1	92	161	1.43	26	35
CW	MARB	RE	FAT	\$M	\$B	\$C
72	1.13	0.81	0.029	88	193	338

CED	BW	WW	YW	DMI	YH	SC	DOC	HP	CEM	MLK	MW	MH	CW	MARB	RE	FAT	TEND
36	55	2	4	99	36	21	1	49	25	36	11	18	1	7	15	75	68

Recommended for cows, BW 76 lbs. Ranks in the top 25% for 19 different EPDs or \$Values including top 1% for \$C, Doc, WW and YW.



DAM OF LOTS 35, 36 Hoover No Doubt

36**CA No Doubt 831**

BULL REG: 20028769 BIRTH DATE: 01/03/21 TATTOO: 831

Mogck Bullseye#
 Hoover No Doubt 17882682
 Miss Blackcap Ellston J2
 K C F Bennett TheRock A473
 Powell Erica 8012
 Williams Prop Erica 255-139

MOGCK Sure Shot#
 Mogck Mary 1255
 SydGen C C & 7#
 Miss Blackcap Ellston D154#
 K C F Bennett Southside#
 K C F Miss Protege W148
 G A R Prophet#
 Williams Erica 812

CED	BW	WW	YW	SC	MILK	DOC
6	2.0	68	128	1.17	30	32
CW	MARB	RE	FAT	\$M	\$B	\$C
62	1.00	0.60	0.035	95	170	315

CED	BW	WW	YW	DMI	YH	SC	DOC	HP	CEM	MLK	MW	MH	CW	MARB	RE	FAT	TEND
26	23	61	43	89	34	45	2	14	14	55	87	54	31	14	52	83	91

Recommended for cows, BW 86 lbs. Ranks in the top 25% for 16 different EPDs or \$Values including top 1% for \$M.





Lot 37

37 CA Enforcer 789

BULL REG: 19997585 BIRTH DATE: 02/08/21 TATTOO: 789

S S Enforcer E812
19274932
| SydGen Enhance
| S S Miss Daybreak K011 3K17#

CA Rita 460
19291056
| Chair Rock Prophet 3071

SydGen Exceed 3223
SydGen Rita 2618
S S Daybreak K011
S S Miss Incentive X19
baldrige Xpand x743
Baldrige Isabel Y69
G A R Prophet#
Chair Rock 5050 G A R 1131

CED	BW	WW	YW	SC	MILK	DOC
5	1.7	80	150	1.36	34	25
CW	MARB	RE	FAT	\$M	\$B	\$C
57	0.99	0.83	-0.016	71	173	295

CED	BW	WW	YW	DMI	YH	SC	DOC	HP	CEM	MLK	MW	MH	CW	MARB	RE	FAT	TEND
56	44	53	13	75	66	23	28	58	92	17	84	88	57	32	29	10	53

Recommended for heifers or cows, BW 72 lbs. Ranks in the top 25% for 17 different EPDs or \$Values. Good bull here.

38 CA Enforcer 796

BULL REG: 19998581 BIRTH DATE: 03/13/21 TATTOO: 796

S S Enforcer E812
19274932
| SydGen Enhance
| S S Miss Daybreak K011 3K17#

CA Erica Dianna 546
19465705
| Baldrige Alternative E125
| Diablo Erica Dianna 9034

SydGen Exceed 3223
SydGen Rita 2618
S S Daybreak K011
S S Miss Incentive X19
Poss Easy Impact 0119
Baldrige Blackbird A030
G A R Prophet#
Diablo Erica Dianna 5010

CED	BW	WW	YW	SC	MILK	DOC
4	2.3	83	149	1.80	32	36
CW	MARB	RE	FAT	\$M	\$B	\$C
58	1.03	0.69	0.016	71	168	289

CED	BW	WW	YW	DMI	YH	SC	DOC	HP	CEM	MLK	MW	MH	CW	MARB	RE	FAT	TEND
64	66	25	10	79	78	6	1	73	44	11	38	57	42	20	35	58	37

Recommended for cows, BW 78 lbs. Ranks in the top 25% for 16 different EPDs or \$Values.

39 CA Enforcer 843

BULL REG: 20051207 BIRTH DATE: 01/14/21 TATTOO: 843

S S Enforcer E812
19274932
| SydGen Enhance
| S S Miss Daybreak K011 3K17#

G A R 100X 665
18333054
| G A R 100X#
| G A R Prophet 3293#

SydGen Exceed 3223
SydGen Rita 2618
S S Daybreak K011
S S Miss Incentive X19
A A R Ten X 7008 S A#
G A R 5050 New Design A91
G A R Prophet#
G A R Complete 991

CED	BW	WW	YW	SC	MILK	DOC
6	1.5	82	145	1.06	23	25
CW	MARB	RE	FAT	\$M	\$B	\$C
51	0.97	1.00	-0.039	60	161	269

CED	BW	WW	YW	DMI	YH	SC	DOC	HP	CEM	MLK	MW	MH	CW	MARB	RE	FAT	TEND
63	69	18	12	87	39	29	32	85	57	75	34	37	47	21	11	5	61

Recommended for heifers or cows, BW 70 lbs.



SIRE OF LOTS 37, 38, 39, 42 S S Enforcer E812



Lot 39

www.TexasBeefHouse.com

Texas BeefHouse supper served Friday evening before the sale and on sale day!
Capitol Angus Ranch is a strategic part of our beef business, Texas BeefHouse.

40

CA Alpha 832

BULL REG: 20032156 BIRTH DATE: 12/28/20 TATTOO: 832

Pine View Alpha

19173405

Baldrige Titan A139
Pine View Burgess B066



Connealy Consensus 7229#

McKellar Breesha Bell 2350

17552411

Breesha of Conanga 1251

Baldrige Waylon W34#
Baldrige Forever Lady T269
Connealy Black Granite#
Pine View Burgess Y051
Connealy Consensus#
Blue Lilly of Conanga 16
Connealy Deep Canyon 454#
Breeta of Conanga 525#

CED	BW	WW	YW	SC	MILK	DOC											
3	1.9	73	126	1.73	22	31											
CW	MARB	RE	FAT	\$M	\$B	\$C											
45	0.58	0.73	0.070	69	127	234											
CED	BW	WW	YW	DMI	YH	SC	DOC	HP	CEM	MLK	MW	MH	CW	MARB	RE	FAT	TEND
62	55	18	39	89	45	3	7	22	18	68	30	61	27	60	17	94	86

Recommended for cows, BW 64 lbs.



41

CA Arsenal 895

BULL REG: 20201337 BIRTH DATE: 03/14/21 TATTOO: 895

F A R Outstanding F66

18624713

44 Arsenal 4W07
G A R New Day 00



G A R Prophet#

RQR Saylor Rae 271

18103280

G A R Objective 1067

Baldrige Waylon W34#
DZ ND 5050 0F15
B/R New Day 454#
G A R Objective 2177
C R A Bextor 872 5205 608#
G A R Objective 1885
S S Objective T510 0T26#
G A R Retail Product 2195

CED	BW	WW	YW	SC	MILK	DOC											
4	2.5	69	127	0.52	32	22											
CW	MARB	RE	FAT	\$M	\$B	\$C											
54	1.01	0.92	-0.040	55	169	274											
CED	BW	WW	YW	DMI	YH	SC	DOC	HP	CEM	MLK	MW	MH	CW	MARB	RE	FAT	TEND
92	88	39	31	80	46	45	34	71	89	23	45	48	35	18	11	3	46

Recommended for cows, BW 64 lbs.



Matthew 6:19-21



Visions and commitment to them have become increasingly rare these days. That is why it is such a joy to come to Whitehouse, TX and see the continued vision of Capitol Angus take shape and come true. The ranch, the genetics, and the business vision continue to move forward to build a program that can produce highly desired marbled genetics that can perform in east Texas and across the country every year. That vision, as seen in this offering, and the new developments on the land have and will continue to happen.

The bulls this year are exceptional. As you go through the catalog, please notice the muscle expression in this offering, over 90% of the bulls are suitable for heifers or cows. A focus on the combination of cow families, muscle, and calving-ease through a progress ET program make this happen. The bulls are conditioned perfectly and are ready to go. There are multiple herd-bull prospects on paper and on grass that communicate their progressive genetics built for the future of beef and cattle production.

The female offering is smaller but stacked in potential donor prospects. These females represent the front-end of a large set going into the program to build an excellent cow herd. Multiple sisters are retained to build a cow herd that draws attention from across the country. You will notice these females maintain the same selection pressure as the bulls and are strong footed to carry an expansive ability to covert forage to lots of marbled meat. The genetic advancement in this program truly is exciting. Take advantage for your own program.

In closing, when you work for years with people you get to know them. I hope that as the cattle pull you to the program, you get to know the people. People are the important part in our business and the Lord's plan. The DuVall's will add to your life as they have mine and my family. It does not get better than Capitol Angus in cattle or people. If Wes or I can be of assistance, please feel free to contact us.

Chris Earl, CK6 Consulting 630-675-6559 | Wes Tiemann, Auctioneer 816-244-4462



Females



*Watch and bid
on CCI.live!*



42

CA Black Scotch 711

COW REG: 19953621 BIRTH DATE: 10/02/20 TATTOO: 711

S S Enforcer E812
19274932 | S S Miss Daybreak K011 3K17#

CAM Sunrise A6052
18726130 | G A R Prophet A2044

SydGen Exceed 3223
SydGen Rita 2618
S S Daybreak K011
S S Miss Incentive X19
MCC Daybreak#
G A R Objective R227
G A R Prophet#
G A R 5050 New Design A84

CED	BW	WW	YW	SC	MILK	DOC
1	3.6	92	170	-0.33	18	33
CW	MARB	RE	FAT	\$M	\$B	\$C
64	1.30	0.83	-0.035	72	199	330

CED	BW	WW	YW	DMI	YH	SC	DOC	HP	CEM	MLK	MW	MH	CW	MARB	RE	FAT	TEND
81	84	14	2	93	40	96	5	95	90	95	64	73	20	5	23	5	50

Daughter sells as lot 43.

43

CA Black Scotch 1146

COW REG: 20432107 BIRTH DATE: 09/12/22 TATTOO: 1146

Poss Deadwood
19597261 | Poss Ellunamere 399

CA Black Scotch 711
19953621 | CAM Sunrise A6052

Basin Payweight 1682#
Poss Pride 5163
Poss Easy Impact 0119
Poss Ellunamere 0170#
SydGen Enhance
S S Miss Daybreak K011 3K17#
G A R Sunrise
G A R Prophet A2044

CED	BW	WW	YW	SC	MILK	DOC
7	2.3	94	163	0.12	21	30
CW	MARB	RE	FAT	\$M	\$B	\$C
78	1.45	1.02	-0.047	74	231	374

CED	BW	WW	YW	DMI	YH	SC	DOC	HP	CEM	MLK	MW	MH	CW	MARB	RE	FAT	TEND
32	53	2	3	82	8	85	6	93	85	85	40	41	3	2	6	4	8

An outstanding donor prospect from the Capitol herdsire, the \$900,000 Poss Deadwood. Outstanding EPD profile with 17 top 25% EPDs or \$Values, including top 1% of \$C, \$B, \$G, \$F, YW and WW. Excellent pedigree with elite marbling and performance. Dam sells as lot 42.

44

CA Rita 1089

COW REG: 20348643 BIRTH DATE: 12/29/21 TATTOO: 1089

Poss Maverick
18962396 | Poss Pride 5163

E W A 678 of 3128 Sure Fire
18675046 | E W A 3128 of 9067 Weigh Up

Basin Payweight 006S#
21AR O Lass 7017
Poss Hoover Dam 2509
Poss Pride 9526
Connealy In Sure 8524#
Chair Rock 5050 G A R 8086
Plattmeyer Weigh Up K360#
Rita 9067 of Rita 5M13 Obj

CED	BW	WW	YW	SC	MILK	DOC
7	-0.4	85	158	1.13	37	27
CW	MARB	RE	FAT	\$M	\$B	\$C
84	1.49	0.91	0.030	54	234	357

CED	BW	WW	YW	DMI	YH	SC	DOC	HP	CEM	MLK	MW	MH	CW	MARB	RE	FAT	TEND
34	10	5	1	96	18	17	12	30	85	10	1	4	1	2	8	52	25

Another donor prospect sired by the breed legend, Poss Maverick, from elite donor, 678. Ranks in the top 25% for 18 different EPDs or \$Values including top 1% for \$C, \$B, \$G, \$F, \$W, Marb, CW and RADG. This female has a big spread between BW and YW. A big marbling EPD combined with the Maverick dense body type could equal a foundation donor for many programs.

45

CA Breesha Bell 912

COW REG: 20276924 BIRTH DATE: 09/20/21 TATTOO: 912

H P C A Zephyr
19397424 | Chair Rock Sure Fire 7009

CA Dorothy Marie 424
19089372 | McKellar Breesha Bell 2350

G A R Prophet#
H P C A Sunrise 9022
G A R Sure Fire#
Chair Rock All In 5002
baldrige Xpand x743
Baldrige Isabel Y69
Connealy Consensus 7229#
Breesha of Conanga 1251

CED	BW	WW	YW	SC	MILK	DOC
4	2.8	79	141	0.91	26	36
CW	MARB	RE	FAT	\$M	\$B	\$C
61	1.64	1.20	-0.008	80	203	343

CED	BW	WW	YW	DMI	YH	SC	DOC	HP	CEM	MLK	MW	MH	CW	MARB	RE	FAT	TEND
76	90	5	5	100	16	28	1	67	77	54	21	15	7	1	1	17	32

Selling half Interest. Ranks in the top 25% for 16 different EPDs or \$Values including top 1% for \$C, \$B, \$G, Mar, HS and DOC. 912's sire is a featured herdsire and is started down the road of elite status through production and stamping his progeny. 912 is an elite diverse pedigreed female that will be a sale day favorite. Great future in front of this herder and her ownership.



CA Breesha Bell 915

46

COW REG: 20276919 BIRTH DATE: 09/14/21 TATTOO: 915

H P C A Zephyr 9517
19397424 | Chair Rock Sure Fire 7009



| Baldrige Colonel C251

CA Dorothy Marie 424
19089372 | McKellar Breesha Bell 2350

G A R Prophet#
H P C A Sunrise 9022
G A R Sure Fire#
Chair Rock All In 5002
baldrige Xpand x743
Baldrige Isabel Y69
Connealy Consensus 7229#
Breesha of Conanga 1251

CED	BW	WW	YW	SC	MILK	DOC
5	1.2	82	142	0.92	29	20
CW	MARB	RE	FAT	\$M	\$B	\$C
51	1.51	0.83	0.022	74	173	298

CED	BW	WW	YW	DMI	YH	SC	DOC	HP	CEM	MLK	MW	MH	CW	MARB	RE	FAT	TEND
73	72	6	9	100	38	41	35	56	94	51	36	52	18	1	18	71	37

Ranks in the top 25% for 13 different EPDs or \$Values. Huge marbling score and top 1% HS. Nice genetic combination.

47

CA Rita 995

COW REG: 20310099 BIRTH DATE: 10/17/21 TATTOO: 995

Baldrige Alternative E125
18837398 | Baldrige Blackbird A030



| G A R Sure Fire#

E W A 678 of 3128 Sure Fire
18675046 | E W A 3128 of 9067 Weigh Up

Poss Total Impact 745#
Poss Elmaretta 736
Hoover Dam#
Baldrige Blackbird X89
Connealy In Sure 8524#
Chair Rock 5050 G A R 8086
Plattmere Weigh Up K360#
Rita 9067 of Rita 5M13 Obj

CED	BW	WW	YW	SC	MILK	DOC
12	1.0	91	170	0.97	19	11
CW	MARB	RE	FAT	\$M	\$B	\$C
90	0.95	1.03	-0.013	43	216	323

CED	BW	WW	YW	DMI	YH	SC	DOC	HP	CEM	MLK	MW	MH	CW	MARB	RE	FAT	TEND
15	29	3	1	100	40	25	90	51	26	91	1	4	1	22	6	16	93

Incredible daughter of Baldrige Alternative with 20 top 25% EPDs or \$Values, including a 12 CED to 170 YW spread. She is the only Baldrige Alternative in the breed with that spread with a 0.7 YH. A valuable donor prospect.



Lot 49

CA Karama 1032

49

COW REG: 20310873 BIRTH DATE: 10/27/21 TATTOO: 1032

V A R Revelation 6299
18432146 | Sandpoint Blackbird 8809



| ECO Lombardi 1512

Powell Karama 8348
19203951 | Williams Prop Karama 200-117

MCC Daybreak#
QHF Blackcap 6E2 of 4V16 4355
Connealy Onward#
Riverbend Blackbird 4301
V A R Discovery 2240#
RB Lady 7125-890-2170
G A R Prophet#
Williams Karama 159

CED	BW	WW	YW	SC	MILK	DOC
3	2.8	90	169	1.25	22	26
CW	MARB	RE	FAT	\$M	\$B	\$C
77	1.08	0.96	-0.045	61	207	329

CED	BW	WW	YW	DMI	YH	SC	DOC	HP	CEM	MLK	MW	MH	CW	MARB	RE	FAT	TEND
89	90	1	1	99	37	35	8	82	79	80	5	3	3	10	8	3	91

Ranks in the top 25% for 21 different EPDs or \$Values Including top 1% for \$C, \$B, YW and RADG.



CA Duchess 1145

50

COW REG: 20432106 BIRTH DATE: 09/11/22 TATTOO: 1145

H P C A Zephyr 9517
19397424 | Chair Rock Sure Fire 7009



| Hoover No Doubt

IMS RRR Duchess R0160
19707248 | 2 Bar Consent 8114

G A R Prophet#
H P C A Sunrise 9022
G A R Sure Fire#
Chair Rock All In 5002
Mogck Bullseye#
Miss Blackcap Ellston J2
K C F Bennett Consent Y75
2 Bar Discovery 6068

CED	BW	WW	YW	SC	MILK	DOC
3	2.6	74	140	1.70	25	21
CW	MARB	RE	FAT	\$M	\$B	\$C
53	1.32	0.97	-0.014	82	180	315

CED	BW	WW	YW	DMI	YH	SC	DOC	HP	CEM	MLK	MW	MH	CW	MARB	RE	FAT	TEND
95	94	22	5	99	46	13	41	17	15	71	60	76	28	6	6	16	51

Ranks in the top 25% for 16 different EPDs or \$Values. Traces to the \$52,000 2 Bar Consent 8114 donor cow. Add this female to your replacement pen; she has donor potential.

51**CA Rita 1061**

COW REG: 20312381 BIRTH DATE: 09/24/21 TATTOO: 1061

Connealy Confidence 0100#
 Connealy Confidence Plus#
 17585576



| Elbanna of Conanga 1209

CA Rita 589

19639155

| Woodside Rita 5M25 of 3P22

Connealy Tobin
 Becca Gala of Conanga 8281
 Connealy Consensus#
 Elbasta of Conanga 9703
 SydGen Exceed 3223
 SydGen Rita 2618
 Rito 3510 of 9Q15 Progress
 Rita 3P22 of 9Q15 Prophet

CED	BW	WW	YW	SC	MILK	DOC
8	1.0	74	141	0.65	32	31
CW	MARB	RE	FAT	\$M	\$B	\$C
53	1.10	1.04	-0.002	83	181	318

CED	BW	WW	YW	DMI	YH	SC	DOC	HP	CEM	MLK	MW	MH	CW	MARB	RE	FAT	TEND
38	48	23	7	84	49	75	14	65	86	42	78	74	37	12	7	38	42

Ranks in the top 25% for 16 different EPDs or \$Values. A proven sire who is a breed legend from a program focused on end-product merit. Good replacement female here.

*lot 51***52****CA Victoria 919**

COW REG: 20276993 BIRTH DATE: 09/21/21 TATTOO: 919

H P C A Zephyr
 H P C A Zephyr 9517
 19397424



| Chair Rock Sure Fire 7009

| Baldrige Titan A139

CA Victoria 418

18992668

| Dsa Rito 9Q13 1022 1417

G A R Prophet#
 H P C A Sunrise 9022
 G A R Sure Fire#
 Chair Rock All In 5002
 Baldrige Waylon W34#
 Baldrige Forever Lady T269
 Rito 9Q13 of Rita 5F56 GHM#
 DSA New Direction 1022

CED	BW	WW	YW	SC	MILK	DOC
9	1.2	73	129	1.55	31	29
CW	MARB	RE	FAT	\$M	\$B	\$C
64	1.19	0.78	0.067	82	179	314

CED	BW	WW	YW	DMI	YH	SC	DOC	HP	CEM	MLK	MW	MH	CW	MARB	RE	FAT	TEND
28	41	15	25	90	31	6	8	31	57	19	54	43	9	7	26	100	63

Donor quality phenotype and EPDs. Ranks in the top 25% for 17 different EPDs or \$Values. Built for the future of elite genetic balance that can perform in any region. The great Rita cow family tracing to DSA New Direction 1022 anchors this female. Take a close look.

*lot 52***53****CA Victoria 917**

COW REG: 20276997 BIRTH DATE: 09/17/21 TATTOO: 917

H P C A Zephyr
 H P C A Zephyr 9517
 19397424



| Chair Rock Sure Fire 7009

| Baldrige Titan A139

CA Victoria 418

18992668

| Dsa Rito 9Q13 1022 1417

G A R Prophet#
 H P C A Sunrise 9022
 G A R Sure Fire#
 Chair Rock All In 5002
 Baldrige Waylon W34#
 Baldrige Forever Lady T269
 Rito 9Q13 of Rita 5F56 GHM#
 DSA New Direction 1022

CED	BW	WW	YW	SC	MILK	DOC
5	0.1	69	119	0.59	26	19
CW	MARB	RE	FAT	\$M	\$B	\$C
57	1.31	0.90	0.010	64	186	305

CED	BW	WW	YW	DMI	YH	SC	DOC	HP	CEM	MLK	MW	MH	CW	MARB	RE	FAT	TEND
49	17	21	50	75	25	61	49	60	31	38	35	22	17	4	9	52	52

Full sister to lot 52 and the same type of elite female. Ranks in the top 25% for 13 different EPDs or \$Values.

55**CA Rita 1056**

COW REG: 20312354 BIRTH DATE: 09/26/21 TATTOO: 1056

Cherry Creek Land Grant
 Connealy Clarity
 19555171



| Breshie of Conanga 6988

| Baldrige Colonel C251

CA Rita 456

19291054

| Chair Rock Prophet 3071

K C F Bennett Homestead#
 Cherry Crk Eva B27 M
 Connealy Confidence Plus#
 Bretley of Conanga 367
 baldrige Xpand x743
 Baldrige Isabel Y69
 G A R Prophet#
 Chair Rock 5050 G A R 1131

CED	BW	WW	YW	SC	MILK	DOC
10	0.4	73	139	0.80	33	31
CW	MARB	RE	FAT	\$M	\$B	\$C
61	1.17	1.14	-0.028	67	188	311

CED	BW	WW	YW	DMI	YH	SC	DOC	HP	CEM	MLK	MW	MH	CW	MARB	RE	FAT	TEND
16	26	25	7	92	31	56	6	50	46	18	23	39	10	6	2	10	15

1056 is not lotted last because of her quality. The quality is deep in this small female offering and we wanted to highlight her. Ranks in the top 25% for 19 different EPDs and \$Values. Sired by one of the most sought-after genetics, 1056 has the phenotype and performance to be a top donor prospect anywhere. This heifer is excellent and will show her cow family and sire well.

54**CA Erica Dianna 907**

COW REG: 20240005 BIRTH DATE: 09/21/21 TATTOO: 907

H P C A Zephyr
 H P C A Zephyr 9517
 19397424



| Chair Rock Sure Fire 7009

| Hoover No Doubt

CA Erica Dianna 537

19465701

| Diablo Erica Dianna 9034

G A R Prophet#
 H P C A Sunrise 9022
 G A R Sure Fire#
 Chair Rock All In 5002
 Mogck Bullseye#
 Miss Blackcap Ellston J2
 G A R Prophet#
 Diablo Erica Dianna 5010

CED	BW	WW	YW	SC	MILK	DOC
10	0.3	78	140	1.60	24	27
CW	MARB	RE	FAT	\$M	\$B	\$C
52	1.37	0.52	0.031	91	169	310

CED	BW	WW	YW	DMI	YH	SC	DOC	HP	CEM	MLK	MW	MH	CW	MARB	RE	FAT	TEND
31	27	27	13	97	92	3	15	13	17	62	60	75	50	3	56	58	16

Ranks in the top 25% for 17 different EPDs or \$Values. From the same cow family who produced Diablo Deluxe, this excellent female will show her great cow family and sire on sale day. Donor potential.

*lot 55*

SOURCE ~~K~~⁶E

MATTHEW 6:19-21

We have been blessed to be a part of these exciting herd sires that will play a big role in moving Capitol Angus forward. Semen available at ck6source.com!

Owned by:
 Capitol Angus, TX
 Dixie Valley Angus, CA
 Poss Angus, NE
 GMC Angus, WV
 Pine View Angus, IA
 Iron Creek, IA
 Mountain View Ranch, TN
 Reverse Rocking R, NM



Semen \$200 Certs \$50

herd sire Poss Deadwood

BULL REG: 19597261 **BIRTH DATE:** 09/05/2019 **TATTOO:** 9731

|Basin Payweight 1682#
Poss Maverick
 |Poss Pride 5163

|Poss Easy Impact 0119
Poss Ellunamere 399
 |Poss Ellunmere 0170#

Basin Payweight 006S#
 21AR O Lass 7017
 Poss Hoover Dam 2509
 Poss Pride 9526
 Poss Total Impact 745#
 Poss Elmaretta 736
 G A R Predestined#
 Poss Ellunmere 204

CED	BW	WW	YW	SC	MILK	DOC
14	-0.4	82	145	1.10	30	22
CW	MARB	RE	FAT	\$M	\$B	\$C
81	1.87	1.00	0.033	65	254	394

Owned by:
 Capitol Angus, TX
 Baldrige Performance
 Angus, NE



Semen \$30 Certs \$30

herd sire Baldrige Guardian

BULL REG: 19896033 **BIRTH DATE:** 05/14/2019 **TATTOO:** G507

|Poss Easy Impact 0119
Baldrige Alternative E125
 |Baldrige Blackbird A030

|Basin Payweight 1682#
Baldrige Zara D330
 |Baldrige Zara B435

Poss Total Impact 745#
 Poss Elmaretta 736
 Hoover Dam#
 Baldrige Blackbird X89
 Basin Payweight 006S#
 21AR O Lass 7017
 Baldrige Xpand X227
 Baldrige Zara U85

CED	BW	WW	YW	SC	MILK	DOC
10	1.5	95	169	1.03	33	24
CW	MARB	RE	FAT	\$M	\$B	\$C
82	1.01	0.62	0.035	62	190	308

Owned by:
 Capitol Angus, TX
 Poss Angus, NE



Semen \$35 Certs \$35

herd sire Pine View Premium

BULL REG: 19786413 **BIRTH DATE:** 12/20/2019 **TATTOO:** H8

|TC Cut Above 426
High Point Werner Cut Above
 |High Point Eldorene 2046#

|Connealy In Focus 4925#
Pine View Susanna C097#
 |SIH Complete of 353F 0100

D R Sierra Cut 7404#
 TC Marcia 1522
 S A V Net Worth 4200#
 KCS Eldorene 6016
 Mytty In Focus#
 Black Cana of Conanga 206
 Summitcrest Complete 1P55#
 J/R Susanna of 5050 353F

CED	BW	WW	YW	SC	MILK	DOC
8	1.4	88	154	1.71	34	24
CW	MARB	RE	FAT	\$M	\$B	\$C
84	0.95	1.02	0.027	74	199	332



BEEFHHOUSE

www.TexasBeefHouse.com

Order Today!

**LOCALLY RAISED
WAGYU AND ANGUS**

BEEF



**CAPITOL
ANGUS**

16215 FM 2964

Whitehouse, TX 75791

CapitolAngus.com



**CAPITOL
ANGUS**

NOVEMBER 12

2022 · 6 PM

AT THE RANCH · TYLER, TX



diversified genetics to meet ranchers' needs

Aaron DuVall 903-312-6994 || Tyler DuVall 903-316-6225